

cube it.



In Stock!
Ready to Ship!

Ultra2 Panel System

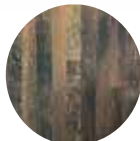
Ultra2 Systems. OEM Compatible. Ultra2 Systems offers fabric and glass panels in varying heights with a 6" raceway to meet electrical and data needs. There are multiple work surfaces, components and accessories. Ultra2 is the ideal combination of value and performance. The possibilities are endless! Ultra2 provides you with the flexibility to design your space to meet your needs – from cluster-working environments, to private offices – you can design Ultra2 to work for you. Utilizing low panel height you can create a teaming environment, or integrate high panels to create a more private configuration. Ultra2 has two distinctive, in-stock fabrics and 8 options for work surfaces. Let Ultra2 be your in-stock solution for your office space. Free space planning is available.

2 Fabric Choices!
8 Laminate Choices!

ULTRA2 | Typical



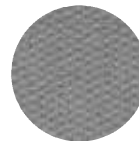
**Whiteburst
Fabric**



**Walnut Block
Laminate**

OFD-U2-24534-NP
53" high 4-Pod Workstation
2'x4'
Includes Powered Spine, Base
Power Feed and 1 Receptacle
per Station
List \$7,164
List per Station \$1,791

Available May 1!

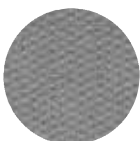


**Midnight Stone
Fabric**



**Brite White
Laminate**

OFD-U2-66534C
53" high 4-Pod Workstation
6'x6'
Includes Powered Spine, Base
Power Feed, BBF Pedestal, and
2 Receptacles per Station
List \$18,698
List per Station \$4,674.50



**Midnight Stone
Fabric**



**Burnt Strand
Laminate**

OFD-U2-665341P
53" high 2-Pod Workstation
6'x6'
Includes Powered Spine, Base
Power Feed, BBF Pedestal, 2
Receptacles and a 48" Half
Shelf per Station
List \$11,224
List per Station \$5,612



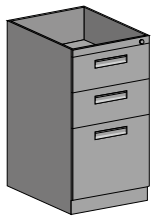
**Whiteburst
Fabric**



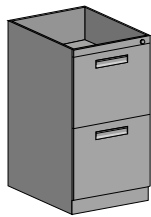
**Brite White
Laminate**

OFD-U2-55534G
53" high 4-Pod Workstation
5'x5'
Includes Powered Spine, Base
Power Feed, BBF Pedestal and
2 Receptacles per Station
List \$19,184
List per Station \$4,796

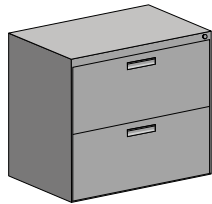
Ultra2 Panel System | Parts



OFD-BBF
Pedestal Box/Box/File
27.5"Hx15"Wx20"D
List \$602



OFD-FF
Pedestal File/File
27.5"Hx15"Wx20"D
List \$602



OFD-LAT30
Lateral File Pedestal
27.5"Hx30"Wx20"D
List \$1,346



OFD-PFDU-24
24"W Painted
Flipper Door Unit
List \$412



OFD-PFDU-30
30"W Painted
Flipper Door Unit
List \$441



OFD-PFDU-36
36"W Painted
Flipper Door Unit
List \$490



OFD-PFDU-48
48"W Painted
Flipper Door Unit
List \$547



OFD-PFDU-60
60"W Painted
Flipper Door Unit
List \$606

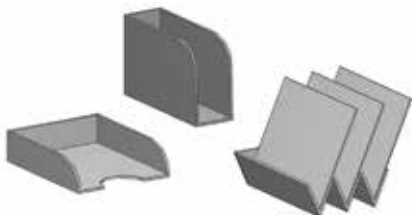
OFD-PEDFB
File Bar for Side to Side
Filing on Pedestal
List \$22

OFD-LATFB
File Bar for Front to Back
Filing on Lateral File
List \$24

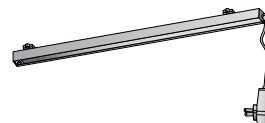


- OFD-HALFSHELF24 - 24" "B" Style Shelf, Half Height End Panels List \$163
- OFD-HALFSHELF30 - 30" "B" Style Shelf, Half Height End Panels List \$177
- OFD-HALFSHELF36 - 36" "B" Style Shelf, Half Height End Panels List \$193
- OFD-HALFSHELF48 - 48" "B" Style Shelf, Half Height End Panels List \$216
- OFD-HALFSHELF60 - 60" "B" Style Shelf, Half Height End Panels List \$239

- OFD-SHELF24 - 24" "B" Style Shelf, Full Height End Panels List \$191
- OFD-SHELF30 - 30" "B" Style Shelf, Full Height End Panels List \$205
- OFD-SHELF36 - 36" "B" Style Shelf, Full Height End Panels List \$221
- OFD-SHELF48 - 48" "B" Style Shelf, Full Height End Panels List \$244
- OFD-SHELF60 - 60" "B" Style Shelf, Full Height End Panels List \$267



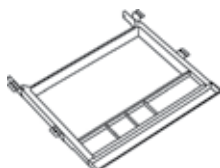
OFD-TRAY - Letter Size Tray 12"x10"x3" List \$84
OFD-VTRAY - Vertical Single Tray 12"x4"x8" List \$84
OFD-3VTRAY - Vertical Triple Tray 12"x4"x8" .. List \$107



OFD-LED.20 - Task Light for Overhead/Shelf List \$240
OFD-LED.38 - Task Light for Overhead/Shelf List \$270
OFD-WM - Wire Manager for Task Lights List \$19

OFD-START39 - Wall Start for 39" Panel... List \$59
OFD-START53 - Wall Start for 53" Panel... List \$59
OFD-START67 - Wall Start for 67" Panel... List \$61

OFD-STRIP60 - Wall Strip - 60" List \$77
OFD-STRIP72 - Wall Strip - 72" List \$83



OFD300DR - Center Drawer
List \$130

OFD-RECP4-1 - Circuit 1 (A) List \$33
OFD-RECP4-2 - Circuit 2 (B) List \$33
OFD-RECP4-3 - Circuit 3 (C) List \$33
OFD-RECP4-4 - Circuit 4 (D dedicated) List \$33

OFD-FTDPP - Data Plate - Black List \$46

OFD-PASS23 - 23" Pass-Through Cable .. List \$85

Tool Bar for Trays and Sorter



OFD-TB24 - Tool Bar 24" List \$93
OFD-TB30 - Tool Bar 30" List \$100
OFD-TB36 - Tool Bar 36" List \$108
OFD-TB48 - Tool Bar 48" List \$125
OFD-TB60 - Tool Bar 60" List \$136

OFD-DCL
Dual Column Leg
Support
List \$184
Additional Work Surface
Support Leg, Black
27¾"Hx18"D



OFD-Pole-39E - Power Pole to Connect to a 39" High Panel List \$671
OFD-Pole-53E - Power Pole to Connect to a 53" High Panel List \$671
OFD-Pole-67E - Power Pole to Connect to a 67" High Panel List \$671

OFD-Pole-39N - Data Pole to Connect to a 39" High Panel List \$303
OFD-Pole-53N - Data Pole to Connect to a 53" High Panel List \$303
OFD-Pole-67N - Data Pole to Connect to a 67" High Panel List \$303

OFD-BPF - Base Power Feed List \$341

Ultra2 Panel System | Parts



Non-Power Panels

- OFD-3924N - Fabric Panel - Empty Raceway List \$376
- OFD-3930N - Fabric Panel - Empty Raceway List \$411
- OFD-3936N - Fabric Panel - Empty Raceway List \$463
- OFD-3948N - Fabric Panel - Empty Raceway List \$513

- OFD-5324N - Fabric Panel - Empty Raceway List \$406
- OFD-5330N - Fabric Panel - Empty Raceway List \$460
- OFD-5336N - Fabric Panel - Empty Raceway List \$506
- OFD-5348N - Fabric Panel - Empty Raceway List \$617
- OFD-5360N - Fabric Panel - Empty Raceway List \$747

- OFD-6724N - Fabric Panel - Empty Raceway List \$471
- OFD-6730N - Fabric Panel - Empty Raceway List \$528
- OFD-6736N - Fabric Panel - Empty Raceway List \$610
- OFD-6748N - Fabric Panel - Empty Raceway List \$692
- OFD-6760N - Fabric Panel - Empty Raceway List \$831

- OFD-5324GPN - Partial Glazed Fabric Panel - Empty Raceway List \$616
- OFD-5330GPN - Partial Glazed Fabric Panel - Empty Raceway List \$671
- OFD-5336GPN - Partial Glazed Fabric Panel - Empty Raceway List \$808
- OFD-5348GPN - Partial Glazed Fabric Panel - Empty Raceway List \$930

- OFD-6724GPN - Partial Glazed Fabric Panel - Empty Raceway List \$681
- OFD-6730GPN - Partial Glazed Fabric Panel - Empty Raceway List \$738
- OFD-6736GPN - Partial Glazed Fabric Panel - Empty Raceway List \$879
- OFD-6748GPN - Partial Glazed Fabric Panel - Empty Raceway List \$1,078

Corner Work Surfaces



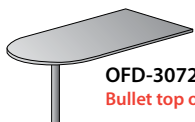
OFD-2436WSCC - Curved Corner Work Surface 24"x36" List \$518

Rectangle Work Surfaces



- *OFD-2424WS - Work Surface Rectangle 24"x24" List \$243
 - *OFD-2430WS - Work Surface Rectangle 24"x30" List \$285
 - OFD-2436WS - Work Surface Rectangle 24"x36" List \$296
 - OFD-2448WS - Work Surface Rectangle 24"x48" List \$385
 - OFD-2460WS - Work Surface Rectangle 24"x60" List \$480
 - OFD-2472WS - Work Surface Rectangle 24"x72" List \$554
- *24" and 30" Wide tops only available in Light Gray and Brushed Nickel.*

Bullet Work Surface



OFD-3072BUL - Bullet Work Surface 30"x72" List \$684
 Bullet top only available in Light Gray and Brushed Nickel.

ULTRA2



Power Panels

- OFD-3924E - Fabric Panel - Electric Raceway List \$527
- OFD-3930E - Fabric Panel - Electric Raceway List \$565
- OFD-3936E - Fabric Panel - Electric Raceway List \$616
- OFD-3948E - Fabric Panel - Electric Raceway List \$664

- OFD-5324E - Fabric Panel - Electric Raceway List \$556
- OFD-5330E - Fabric Panel - Electric Raceway List \$614
- OFD-5336E - Fabric Panel - Electric Raceway List \$691
- OFD-5348E - Fabric Panel - Electric Raceway List \$770
- OFD-5360E - Fabric Panel - Electric Raceway List \$871

- OFD-6724E - Fabric Panel - Electric Raceway List \$620
- OFD-6730E - Fabric Panel - Electric Raceway List \$680
- OFD-6736E - Fabric Panel - Electric Raceway List \$762
- OFD-6748E - Fabric Panel - Electric Raceway List \$844
- OFD-6760E - Fabric Panel - Electric Raceway List \$976

- OFD-5324GPE - Partial-Glazed Fabric Panel - Electric Raceway List \$767
- OFD-5330GPE - Partial-Glazed Fabric Panel - Electric Raceway List \$823
- OFD-5336GPE - Partial-Glazed Fabric Panel - Electric Raceway List \$961
- OFD-5348GPE - Partial-Glazed Fabric Panel - Electric Raceway List \$1,082

- OFD-6724GPE - Partial-Glazed Fabric Panel - Electric Raceway List \$831
- OFD-6730GPE - Partial-Glazed Fabric Panel - Electric Raceway List \$891
- OFD-6736GPE - Partial-Glazed Fabric Panel - Electric Raceway List \$1,033
- OFD-6748GPE - Partial-Glazed Fabric Panel - Electric Raceway List \$1,157

Draw Rods



- OFD-DR39 - Draw Rod for 39" 2 Way Connection 180° List \$24
- OFD-DR53 - Draw Rod for 53" 2 Way Connection 180° List \$25
- OFD-DR67 - Draw Rod for 67" 2 Way Connection 180° List \$25

Connectors



- OFD-2W39 - 2 Way 39" Connector 90° List \$137
- OFD-2W53 - 2 Way 53" Connector 90° List \$168
- OFD-2W67 - 2 Way 67" Connector 90° List \$184

- OFD-3W39 - 3 Way 39" Connector 90° List \$158
- OFD-3W53 - 3 Way 53" Connector 90° List \$200
- OFD-3W67 - 3 Way 67" Connector 90° List \$236
- OFD-3W12053 - 3 Way 53" Connector 120° List \$250

- OFD-4W39 - 4 Way 39" Connector 90° List \$163
- OFD-4W53 - 4 Way 53" Connector 90° List \$210
- OFD-4W67 - 4 Way 67" Connector 90° List \$278

Finished End Trim



- OFD-FE39 - Finished End Trim for 39" Panel List \$64
- OFD-FE53 - Finished End Trim for 53" Panel List \$80
- OFD-FE67 - Finished End Trim for 67" Panel List \$90
- OFD-FECHANGE - Finished End Trim Change of Height Panel . List \$25

Ultra2 | Specifications

Thermofused Laminate Tops

Ultra2 Laminates are selected from premium grade laminates. The Ultra2 Collection is offered in 8 Laminate Finishes. Light Gray, Brushed Nickel, *Brite White, *Wheat Strand, *Burnt Strand, *Sarum Twill, *Wenge Strand and *Walnut Block, all with coordinating edge bands. Tops are 1-1/8" thick and feature a profiled 3mm edge on all four sides. Tops are installed with pins and buttons.

*Grommets are included for all work surfaces except Light Gray and Brushed Nickel

Fabric: WB - Whiteburst, MN - Midnight Stone,

Paint: DT - Dark Tone

Trim: DT - Dark Tone

(All prices in this price list for the work surfaces include the work surface top, 1 pair of mounting cantilevers, pins and buttons to secure work surfaces, and 1 mending bracket. Corner work surfaces include above plus additional corner bracket, grommet and cover. All items above will be listed on your acknowledgement, itemized under each part number.

Pedestals - 20" Deep, BBF and FF style, with locks - "B" Style Fronts

Locks

All pedestals, lateral pedestals, and overheads come standard with lock. All units are keyed random. Requests for different keying can be accommodated, and must be specified.



Optional **W001-W050**

Lock core and keys

List \$25

Panels

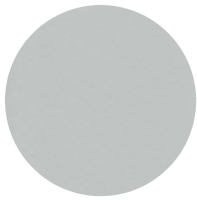
Panels are 2" thick, fabric covered on both sides and feature a steel frame, with a painted aluminum top cap. Each panel comes standard with leveling glides and 2 raceway covers. Electric panels come standard with the wiring harness installed, 2 raceway covers with notched receptacle openings and covers, and a panel-to-panel electric connector. (Order receptacles separately) All items above will be listed on your acknowledgement itemized under each part number.

A pass through cable must be ordered separately when connecting power through a 3-way or 4-way connector.

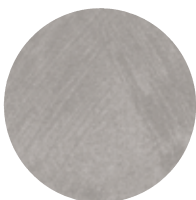
All Power is UL Listed



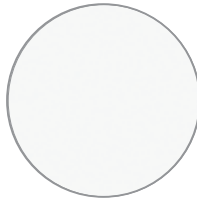
Ultra2 | In-Stock Finishes



Light Gray Laminate



Brushed Nickel Laminate



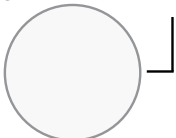
Brite White Laminate*



Wheat Strand Laminate*

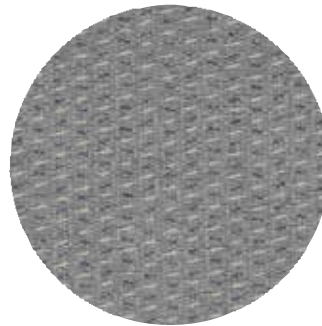


Dark Tone Edge Band
(for Light Gray and Brushed Nickel Top)



White Edge Band
(for Brite White and Wheat Strand Top)

So many options!



Midnight Stone Fabric



Whiteburst Fabric



Burnt Strand Laminate*



Sarum Twill Laminate*

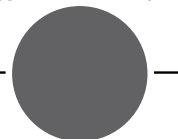


Wenge Strand Laminate*

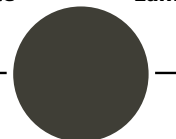


Walnut Block Laminate*

Available May 1!



Dark Gray Edge Band
(for Burnt Strand and Sarum Twill Top)



Dark Brown Edge Band
(for Wenge Strand and Walnut Block Top)



Dark Tone Paint and Trim