

Emerge Executive Chair

OPERATING INSTRUCTIONS

1. To Adjust Seat Height:

While seated, lean forward and reach under the right side of the chair to find the handle. Lift the handle and raise your body up slightly to allow the chair to rise to the desired height. To lower the seat, lift the handle while applying more weight downward on the seat. The chair will descend until the handle is released or the chair reaches the bottom position.

2. To Operate Tilt Lockout:

While seated, reach under the right side of the chair to find the height adjustment handle. Pull the handle all the way out (away from the gas lift) to allow the chair to tilt backwards. To lock the chair in the upright or vertical position, sit upright and push the handle in towards the gas lift.

3. To Adjust Tension on the Tilt Mechanism:

Reach under the front center of the chair, grasp the round knob and turn counter-clockwise to make the tilt mechanism firmer (stiffer). To make the tilt mechanism less firm, turn the knob clockwise until the desired resistance is found.

4. About the Air Cushion:

While seated, the open-air contours of the cushion which is designed to breathe and flex, can dynamically provide continuous support by connecting with your body's natural movement.

The air cushion conforms to the curve of your spinal cord and are intended to relieve your back from stress. The Air™ chair has been shown to help the user achieve neutral posture. Neutral posture has been shown to reduce back strain and increase long term seated comfort.

*Provides constant support as you lean back and twist

*Flexible lumbar pivots and conforms following your movement

*Continuous proper lumbar support help keep the body in an optimal working position for maximum comfort

Note: It is not intended to diagnose, treat, cure or prevent any disease. If pain increases, please discontinue use.

5. 360° Swivel:

360° seat swivel.



Always Comfortable.™

sertapedic.

Model Number: OFD-SER533-BLK

Emerge Executive Chair

PARTS LIST

Part #	Description	Quantity
1.	Casters	5
2.	5 Star Base	1
3.	Gas Lift	1
4.	Seat Plate	1
5.	Seat Cushion	1
6A.	Left Arm	1
6B.	Right Arm	1
7.	Back Cushion	1
8.	Back Support Plate (already attached to the back cushion)	1
9.	1-1/2" Screws	2
10.	1" Screws	2
11.	1-1/4" Screws	4
12.	1-1/2" Screws with Spring Washers	4
13.	Allen Key	1
L1.	Arm Insert	1
L2.	Arm Insert	1
R1.	Arm Insert	1
R2.	Arm Insert	1

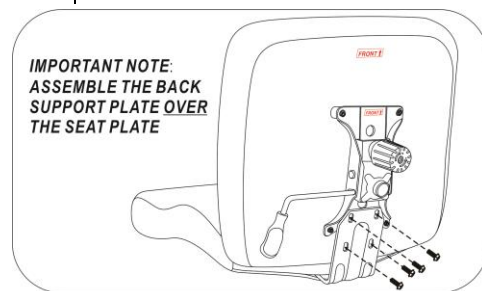
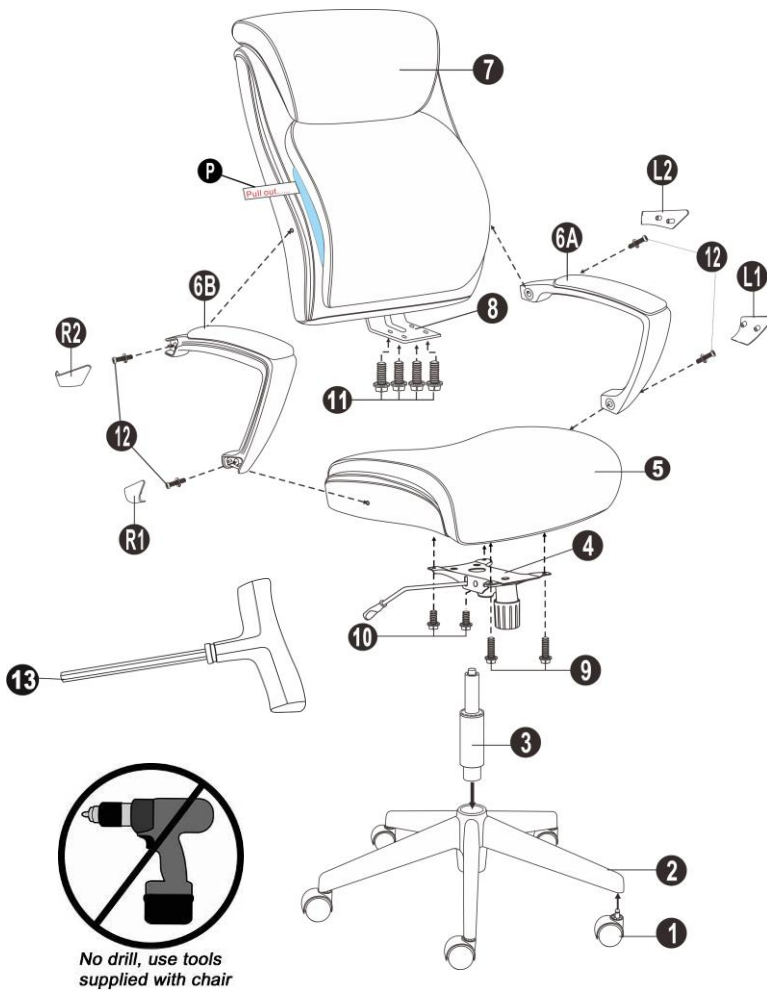


Diagram 1

ASSEMBLY INSTRUCTIONS

- Remove all parts from carton and separate them into part number groups as indicated in the parts list.
- To begin assembly, place 5 Star Base (2) upside down and insert Casters (1) into bottom of Base (2).
- Turn Base (2) right side up on the floor and insert Gas Lift (3) into center hole on Base (2).
- Attach Seat Plate (4) onto the bottom of Seat Cushion (5) (with front of seat plate facing front of seat cushion) by using 1-1/2" Screws (9) for front holes of Seat Plate (4) and 1" Screws (10) for rear holes of Seat Plate (4) and **tighten screws.**
- Align Back Cushion (7) with Seat Cushion (5) by positioning Back Support Plate (8) over the Seat Plate (4) with 1-1/4" Screws (11) as shown in Diagram 1. **Do not tighten screws completely.**
- Insert 1-1/2" Screws with Spring Washers (12) into arm holes attaching Arms (6A & 6B) (with front of arms facing the front of seat cushion) to sides of Seat Cushion (5) and Back Cushion (7). **Now, tighten all the screws. Remember to tighten the back support plate screws also!**
- Place the assembled chair on top of Gas Lift (3) and press down until fully engaged.
- Place the Arm Inserts (L1, L2, R1 & R2) into arm grooves once all screws have been tightened.
- Remove the packaging material (P) placed between the back cushion and the air frame.**
- Periodically (every 90 days) tighten all screws in the chair.

ATTENTION: Make certain all screws are fully tightened before using chair.



Always Comfortable.™

Model Number: OFD-SER533-BLK

sertapedic