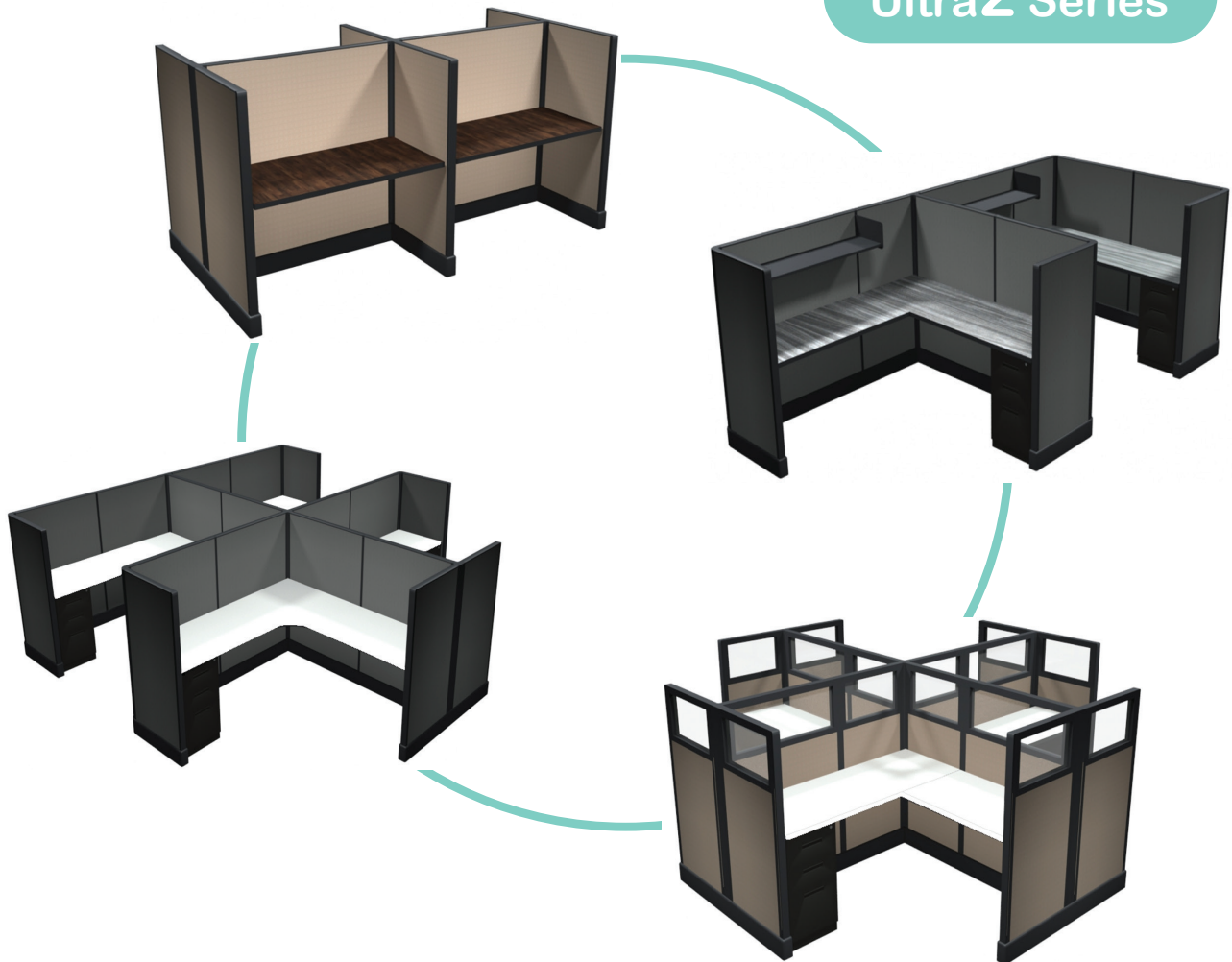


spec **it.**

Ultra2 Series



Ultra2 Panel System

Ultra2 Systems. OEM Compatible. Ultra2 Systems offers fabric and glass panels in varying heights with a 6" raceway to meet electrical and data needs. There are multiple work surfaces, components and accessories. Ultra2 is the ideal combination of value and performance. The possibilities are endless! Ultra2 provides you with the flexibility to design your space to meet your needs – from cluster-working environments, to private offices – you can design Ultra2 to work for you. Utilizing low panel height you can create a teaming environment, or integrate high panels to create a more private configuration. Ultra2 has two distinctive, in-stock fabrics and 8 options for work surfaces. Let Ultra2 be your in-stock solution for your office space. Free space planning is available.

we're
it.
office furni**it**ure distributors

972-386-5200 Phone • 866-648-3635 Toll Free • www.ofdist.com

Ultra2 Panel System General Specifications

PANELS AND ENERGY:

A base power kit is available for use with System 2 panels providing 4-circuit electrical.

PANELS:

- Panels are constructed with hardboard stiles and rails, panel core of a corrugated, honeycombed paperboard, hardboard panel faces laminated to the front and back of the core. The hardware consists of cold-rolled steel and cast aluminum.

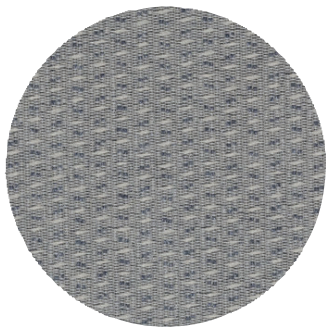
- All panels meet or exceed ANSI/BIFMA requirements for mechanical strength.

- All panels support as many components as can physically fit within the dimensions of the panel.

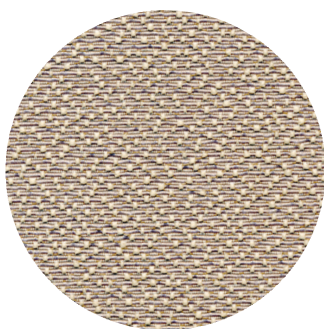
- Panel stability meets ANSI/BIFMA standard X5.6-1986, section 4, and UL1286, section 19.6.

- The panels are available in 39-, 53-, and 67-inch heights.

- The panels are available in 24-, 30-, 36-, and 48-inch widths. Panels are available in 2 standard fabrics:



Midnight Stone Fabric



Whiteburst Fabric



Dark Tone
Paint and Trim

- Panels are equipped with two individual adjustable leveler glides to provide uniform height for adjacent units on uneven floors, and the capability of easily relocating an entire run of panels by sliding over the floor without disassembly of modular counters and shelf storage units.

- The panel system employs a non-progressive entry system where installation may begin with any partition in the run. Once erected, any partition must be removable, replaceable, and relocatable without taking out any other partition or violating the integrity of the panel system.

- Panels are less than 2 inches thick and lightweight (e.g., one person can easily maneuver panels).

- Return panels used for system structural stability match or exceed the width of the work surface. Work surfaces are able to be attached with proper return panels without the need for Counterbalancing.

- The connection system is metal-to-metal and adjustable (the tighter the adjustment, the tighter the connection). The connection system is installable using fewer than three standard carpentry tools.

- All panel connections are filled and sealed to conceal electrical wiring, and connectors are available for two-, three-, and four-way, and straight-line connections.

- Wall strips for panel connection are available in five, and six-foot lengths.

- The panel system meets the Class A requirements for flame spread and smoke development as specified by the National Fire Protection Association (NFPA) in the 1988 Life Safety Code No. 101 and the Underwriters Laboratories requirements for use with energy distribution components.

- Panels accommodate 65 Category 6, 4-pair UTP cables or 83 Category 5, 4-pair UTP cables at a 60% fill rate; without power, accommodates 134 Category 6, 4-pair UTP cables or 173 Category 5, 4-pair UTP cables at a 60% fill rate.



Ultra2 Panel System General Specifications

ENERGY:

- The panel system features eight-wire, four-circuit capability with up to three circuits of isolated ground protection). The system offers up to 80 amps of power.
- The power system has capacity for two duplex outlets per panel side (total of four outlets) on all panels wider than 30 inches.
- The power system is modular and able to provide power selectively only at needed locations, and can be rearranged without altering or disassembling the panel system. Power system has access to any circuit via duplex receptacles. The power system offers ceiling access or end-of-panel access.
- All panels are powered at the factory to save installation time and costs, but power can be retrofittable in the field.
- Panels come with hinged side covers with provide quick and easy access to electrical harnesses and telecommunications cables.
- The power system is reconfigurable without the need for an electrician (unless the reconfiguration involves the building power source).
- The power system can be factory installed with the ability to retrofit in the field to convert a nonpowered panel to a powered panel or vice-versa without without taking out any other partition or violating the integrity of the panel system.

COMPONENTS - Shelves/Flipper Door Units:

- Flipper door storage units are available ordered as complete units or separately as shelves and flipper doors. Flipper door units are able to convert to an open shelf and vice-versa. They are available in widths of 24, 30, 36, and 48 inches, compatible with panel widths. Flipper door units are attachable to either panels or walls (using wall strips) and adjustable vertically at one-inch increments.

- Standard: All flipper door units use a nylon rack-and-pinion gear assembly for finger-tip opening from any point along the door.
- A. Standard: The flipper door units provide filing capacity as follows (in linear inches):

Rack and Pinion:

24-inch unit: 22 1/2 inches of files

30-inch unit: 28 1/2 inches of files

36-inch unit: 34 1/2 inches of files

48-inch unit: 46 1/2 inches of files

- The flipper door fronts are available in painted metal.
- The flipper door units feature an antidislodgment mechanism.
- The load limit for flipper door units are:
24": 69 lbs.
30": 85 lbs.
36": 103 lbs.
48": 139 lbs.

COMPONENTS - Lateral Files:

- Lateral files are available in 30 inch widths, to accommodate letter-, legal-, and A4-size files. Letter-size folders may be filed side-to-side; multiple front-to-back rows of any size folder may be filed using lateral file converters.
- The file drawer, 15 1/2 deep and 12 1/2 inches high, open to 29 3/4 inches in its fully extended position.
- The files offer maximum filing capacity when files are stored side-to-side. In this configuration, the following filing inches are available for letter- and A4-sized documents: 30-inch-wide file provides 27 inches.

Ultra2 Panel System General Specifications

- Lateral file converters are available to allow for front-to-back filing, which reduces filing capacity slightly, depending on document size (letter or legal).

COMPONENTS - Work Surfaces

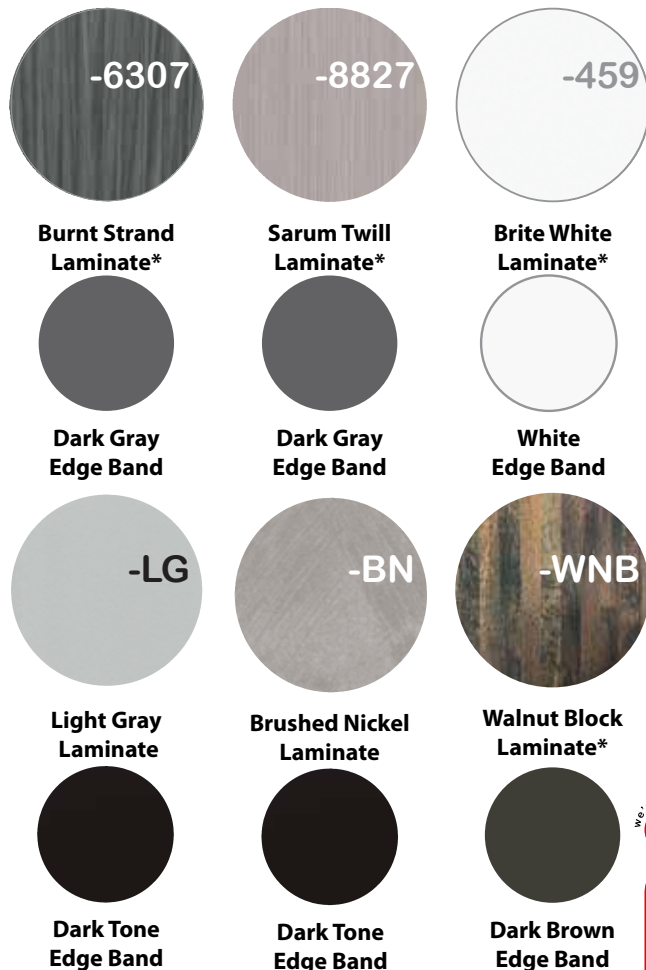
- OFD offers a complete line of cantilevered work surfaces that support individual or team/group general-purpose office work, machine-intensive activities, collaboration, meetings and transactions. The following types of work surfaces are available in 6 laminate colors:

- Hanging (cantilevered) work surfaces, 1 1/4 inches thick with continuous wrapped edges, height adjustable in one-inch increments. A 7/8-inch gap at the back of the work surface allows electrical cords to drop through to cable management components.

- Rectangular work surfaces are available 24 inches deep and 24, 30, 36, 48, 60, 72, inches wide. Holes are predrilled for attaching support arms.

- Corner work surfaces are available 24 inches deep and 36, and 48 inches wide. They include a wire access hole and are predrilled for attaching support arms.

Ultra2 | In-Stock Finishes



*Brite White, Burnt Strand, Walnut Block, and Sarum Twill have grommets.

COMPONENTS - Display Components

- Fabric-covered tackboards are available to be hung from panels or wall strips.

- A tool bar that attaches to a panel to hold a variety of work tools used for organization of papers and materials is available.

- Tackboards are available 16 inches high and 24, 30, 36, and 48 inches wide. The tackboard is constructed of a 3-ply board with a fiberboard outer ply and a hardboard inner ply. Hanger clips of cold-rolled steel allow attachment to panel hanger frames or wall strips; factory-installed screws allow the tackboard to attach to the hanger clips.

- The tool bar, 3 1/2 inches high and 1-1/2 inch deep, is available in 24-, 30-, 36-, and 48-inch widths to match panel widths. It is constructed of painted extruded aluminum with painted steel clips that allow for attachment to panels or wall strips



office furniture distributors