

cube it.



## Ultra2 Panel System

Ultra2 Systems. OEM Compatible. Ultra2 Systems offers fabric and glass panels in varying heights with a 6" raceway to meet electrical and data needs. There are multiple work surfaces, components and accessories. Ultra2 is the ideal combination of value and performance. The possibilities are endless! Ultra2 provides you with the flexibility to design your space to meet your needs – from cluster-working environments, to private offices – you can design Ultra2 to work for you. Utilizing low panel height you can create a teaming environment, or integrate high panels to create a more private configuration. Ultra2 now has three distinctive, in-stock fabrics and four options for work surfaces. Let Ultra2 be your in-stock solution for your office space. Free space planning is available.

*In Stock!  
Ready to Ship!*

*3 Fabric Choices!  
4 Laminate Choices!*

**get it.**

70 we stock it.

## ULTRA2 | Typical Workstations



**OFD-U2-66538**  
**53" Tall - 8-Pod Workstation**  
 6'x6'  
 Includes Powered Spine, Base Power Feed, BBF Pedestal, Partial Glass and 1 Receptacle  
**List \$34,696**  
**List per Station \$4,337**



**Honey Wheat Fabric**



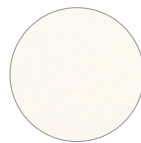
**Cloud White Laminate**



**OFD-U2-24534**  
**53" high 4-Pod Workstation**  
 2'x4'  
 Includes Powered Spine, Base Power Feed, BBF Pedestal, and 1 Receptacle per Station  
**List \$9,572**  
**List per Station \$2,393**



**Midnight Stone Fabric**



**Cloud White Laminate**



**OFD-U2-66534**  
**53" high 4-Pod Workstation**  
 6'x6'  
 Includes Powered Spine, Base Power Feed, BBF/FF Pedestal, 2 Receptacles, and a 48" Half Shelf per Station  
**List \$20,140**  
**List per Station \$5,035**



**Whiteburst Fabric**



**Wild Cherry Laminate**



**OFD-U2-67534**  
**53" high 4-Pod Workstation**  
 6'x7'  
 Includes Powered Spine, Base Power Feed, BBF Pedestal, 2 Receptacles and a Half Shelf per Station  
**List \$21,749**  
**List per Station \$5,437**



**Whiteburst Fabric**



**Wild Cherry Laminate**



**OFD-U2-55534**  
**53" high 4-Pod Workstation**  
 5'x5'  
 Includes Powered Spine, Base Power Feed, BBF Pedestal, 1 Receptacle and a Half Shelf per Station  
**List \$18,526**  
**List per Station \$4,632**

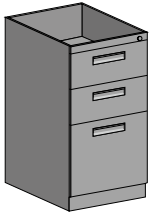


**Whiteburst Fabric**

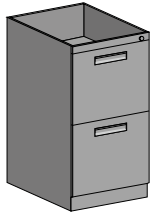


**Cloud White Laminate**

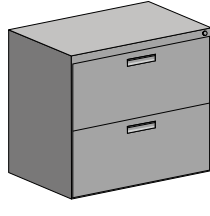
## Ultra2 Panel System



**OFD-BBF**  
Pedestal Box/Box/File  
27.5"Hx15"Wx20"D  
List \$602



**OFD-FF**  
Pedestal File/File  
27.5"Hx15"Wx20"D  
List \$602



**OFD-LAT30**  
Lateral File Pedestal  
27.5"Hx30"Wx20"D  
List \$1,346



**OFD-PFDU-24**  
24"W Painted  
Flipper Door Unit  
List \$412



**OFD-PFDU-30**  
30"W Painted  
Flipper Door Unit  
List \$441



**OFD-PFDU-36**  
36"W Painted  
Flipper Door Unit  
List \$490



**OFD-PFDU-48**  
48"W Painted  
Flipper Door Unit  
List \$547



**OFD-PFDU-60**  
60"W Painted  
Flipper Door Unit  
List \$606

**OFD-PEDFB**  
File Bar for Side to Side  
Filing on Pedestal  
List \$22

**OFD-LATFB**  
File Bar for Front to Back  
Filing on Lateral File  
List \$24



**OFD-HALFSHELF24** - 24" "B" Style Shelf, Half Height End Panels ..... List \$163  
**OFD-HALFSHELF30** - 30" "B" Style Shelf, Half Height End Panels..... List \$177  
**OFD-HALFSHELF36** - 36" "B" Style Shelf, Half Height End Panels ..... List \$193  
**OFD-HALFSHELF48** - 48" "B" Style Shelf, Half Height End Panels ..... List \$216  
**OFD-HALFSHELF60** - 60" "B" Style Shelf, Half Height End Panels ..... List \$239



**OFD-SHELF24** - 24" "B" Style Shelf, Full Height End Panels..... List \$191  
**OFD-SHELF30** - 30" "B" Style Shelf, Full Height End Panels..... List \$205  
**OFD-SHELF36** - 36" "B" Style Shelf, Full Height End Panels ..... List \$221  
**OFD-SHELF48** - 48" "B" Style Shelf, Full Height End Panels ..... List \$244  
**OFD-SHELF60** - 60" "B" Style Shelf, Full Height End Panels ..... List \$267

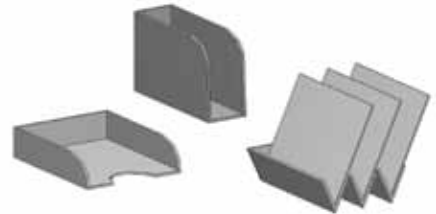


**OFD-LED.20** - Task Light for Overhead/Shelf ..... List \$240  
**OFD-LED.38** - Task Light for Overhead/Shelf ..... List \$270  
**OFD-WM** - Wire Manager for Task Lights ..... List \$19

Tackboard available in all fabrics.



**OFD-UTACK24** - Tackboard 24"x15.5" ... List \$165  
**OFD-UTACK30** - Tackboard 30"x15.5" ... List \$176  
**OFD-UTACK36** - Tackboard 36"x15.5" ... List \$183  
**OFD-UTACK48** - Tackboard 48"x15.5" ... List \$204  
**OFD-UTACK60** - Tackboard 60"x15.5" ... List \$227



**OFD-TRAY** - Letter Size Tray 12"x10"x3" ..... List \$84  
**OFD-VTRAY** - Vertical Single Tray 12"x4"x8" ..... List \$84  
**OFD-3VTRAY** - Vertical Triple Tray 12"x4"x8" .. List \$107

**OFD-START39** - Wall Start for 39" Panel... List \$59  
**OFD-START53** - Wall Start for 53" Panel... List \$59  
**OFD-START67** - Wall Start for 67" Panel... List \$61

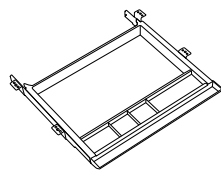
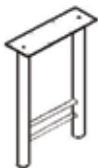
**OFD-STRIP60** - Wall Strip - 60" ..... List \$77  
**OFD-STRIP72** - Wall Strip - 72" ..... List \$83

Tool Bar for Trays and Sorter



**OFD-TB24** - Tool Bar 24" ..... List \$93  
**OFD-TB30** - Tool Bar 30" ..... List \$100  
**OFD-TB36** - Tool Bar 36" ..... List \$108  
**OFD-TB48** - Tool Bar 48" ..... List \$125  
**OFD-TB60** - Tool Bar 60" ..... List \$136

**OFD-DCL**  
Dual Column Leg  
Support  
List \$184  
Additional Work Surface  
Support Leg, Black  
27¾"Hx18"D



**OFD300DR** - Center Drawer  
List \$130



**OFD-TRRS-24** - Transaction Top - Rectangle 14"x 24" ..... List \$141  
**OFD-TRRS-30** - Transaction Top - Rectangle 14"x 30" ..... List \$162  
**OFD-TRRS-36** - Transaction Top - Rectangle 14"x 36" ..... List \$174  
**OFD-TRRS-48** - Transaction Top - Rectangle 14"x 48" ..... List \$212



**OFD-TRCS-24** - Transaction Top - Corner 14"x24" ..... List \$267  
**OFD-TRCS-30** - Transaction Top - Corner 14"x30" ..... List \$368  
**OFD-TRCS-36** - Transaction Top - Corner 14"x36" ..... List \$393  
**OFD-TRCS-48** - Transaction Top - Corner 14"x48" ..... List \$558

**OFD-TRES** - Transaction Surface END Support ..... List \$34  
**OFD-TRMES** - Transaction Surface MID/END Support... List \$34  
**OFD-TRCS** - Transaction Surface CENTER Support ..... List \$35

## Ultra2 Panel System



# ULTRA2



### Non-Power Panels

- OFD-3924N - Fabric Panel - Empty Raceway ..... List \$376
- OFD-3930N - Fabric Panel - Empty Raceway ..... List \$411
- OFD-3936N - Fabric Panel - Empty Raceway ..... List \$463
- OFD-3948N - Fabric Panel - Empty Raceway ..... List \$513
  
- OFD-5324N - Fabric Panel - Empty Raceway ..... List \$406
- OFD-5330N - Fabric Panel - Empty Raceway ..... List \$460
- OFD-5336N - Fabric Panel - Empty Raceway ..... List \$506
- OFD-5348N - Fabric Panel - Empty Raceway ..... List \$617
- OFD-5360N - Fabric Panel - Empty Raceway ..... List \$747
  
- OFD-6724N - Fabric Panel - Empty Raceway ..... List \$471
- OFD-6730N - Fabric Panel - Empty Raceway ..... List \$528
- OFD-6736N - Fabric Panel - Empty Raceway ..... List \$610
- OFD-6748N - Fabric Panel - Empty Raceway ..... List \$692
- OFD-6760N - Fabric Panel - Empty Raceway ..... List \$831
  
- OFD-5324GPN - Partial Glazed Fabric Panel - Empty Raceway..... List \$616
- OFD-5330GPN - Partial Glazed Fabric Panel - Empty Raceway..... List \$671
- OFD-5336GPN - Partial Glazed Fabric Panel - Empty Raceway..... List \$808
- OFD-5348GPN - Partial Glazed Fabric Panel - Empty Raceway..... List \$930
  
- OFD-6724GPN - Partial Glazed Fabric Panel - Empty Raceway..... List \$681
- OFD-6730GPN - Partial Glazed Fabric Panel - Empty Raceway..... List \$738
- OFD-6736GPN - Partial Glazed Fabric Panel - Empty Raceway..... List \$879
- OFD-6748GPN - Partial Glazed Fabric Panel - Empty Raceway..... List \$1,078

### Power Panels

- OFD-3924E - Fabric Panel - Electric Raceway ..... List \$527
- OFD-3930E - Fabric Panel - Electric Raceway ..... List \$565
- OFD-3936E - Fabric Panel - Electric Raceway ..... List \$616
- OFD-3948E - Fabric Panel - Electric Raceway ..... List \$664
  
- OFD-5324E - Fabric Panel - Electric Raceway ..... List \$556
- OFD-5330E - Fabric Panel - Electric Raceway ..... List \$614
- OFD-5336E - Fabric Panel - Electric Raceway ..... List \$691
- OFD-5348E - Fabric Panel - Electric Raceway ..... List \$770
- OFD-5360E - Fabric Panel - Electric Raceway ..... List \$871
  
- OFD-6724E - Fabric Panel - Electric Raceway ..... List \$620
- OFD-6730E - Fabric Panel - Electric Raceway ..... List \$680
- OFD-6736E - Fabric Panel - Electric Raceway ..... List \$762
- OFD-6748E - Fabric Panel - Electric Raceway ..... List \$844
- OFD-6760E - Fabric Panel - Electric Raceway ..... List \$976
  
- OFD-5324GPE - Partial-Glazed Fabric Panel - Electric Raceway..... List \$767
- OFD-5330GPE - Partial-Glazed Fabric Panel - Electric Raceway..... List \$823
- OFD-5336GPE - Partial-Glazed Fabric Panel - Electric Raceway..... List \$961
- OFD-5348GPE - Partial-Glazed Fabric Panel - Electric Raceway..... List \$1,082
  
- OFD-6724GPE - Partial-Glazed Fabric Panel - Electric Raceway..... List \$831
- OFD-6730GPE - Partial-Glazed Fabric Panel - Electric Raceway..... List \$891
- OFD-6736GPE - Partial-Glazed Fabric Panel - Electric Raceway..... List \$1,033
- OFD-6748GPE - Partial-Glazed Fabric Panel - Electric Raceway..... List \$1,157

### Corner Work Surfaces



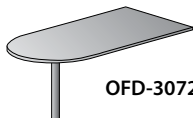
- OFD-2436WSSC - Curved Corner Work Surface 24"x36" ..... List \$518
- OFD-2448WSSC - Curved Corner Work Surface 24"x48" ..... List \$675

### Rectangle Work Surfaces



- OFD-2424WS - Work Surface Rectangle 24"x24" ..... List \$243
- OFD-2430WS - Work Surface Rectangle 24"x30" ..... List \$285
- OFD-2436WS - Work Surface Rectangle 24"x36" ..... List \$296
- OFD-2448WS - Work Surface Rectangle 24"x48" ..... List \$385
- OFD-2460WS - Work Surface Rectangle 24"x60" ..... List \$480
- OFD-2472WS - Work Surface Rectangle 24"x72" ..... List \$554

### Bullet Work Surface



- OFD-3072BUL - Bullet Work Surface 30"x72" ..... List \$684

### Draw Rods

- OFD-DR39 - Draw Rod for 39" 2 Way Connection 180° ..... List \$24
- OFD-DR53 - Draw Rod for 53" 2 Way Connection 180° ..... List \$25
- OFD-DR67 - Draw Rod for 67" 2 Way Connection 180° ..... List \$25

### Connectors

- OFD-2W39 - 2 Way 39" Connector 90° ..... List \$137
- OFD-2W53 - 2 Way 53" Connector 90° ..... List \$168
- OFD-2W67 - 2 Way 67" Connector 90° ..... List \$184

- OFD-3W39 - 3 Way 39" Connector 90° ..... List \$158
- OFD-3W53 - 3 Way 53" Connector 90° ..... List \$200
- OFD-3W67 - 3 Way 67" Connector 90° ..... List \$236

- OFD-4W39 - 4 Way 39" Connector 90° ..... List \$163
- OFD-4W53 - 4 Way 53" Connector 90° ..... List \$210
- OFD-4W67 - 4 Way 67" Connector 90° ..... List \$278

### Finished End Trim

- OFD-FE39 - Finished End Trim for 39" Panel ..... List \$64
- OFD-FE53 - Finished End Trim for 53" Panel ..... List \$80
- OFD-FE67 - Finished End Trim for 67" Panel ..... List \$90
- OFD-FECHANGE - Finished End Trim Change of Height Panel. List \$25

## Ultra2 | Specifications

### Thermofused Laminate Tops

Ultra2 Laminates are selected from premium grade laminates. The Ultra2 Collection is offered in 4 Laminate Finishes. Light Gray is on one side, Brushed Nickel on the other and Cloud White is on one side, Wild Cherry on the other, all with Dark Tone 3mm edge band. Tops are 1-1/8" thick and feature a profiled 3mm edge on all four sides. Tops are installed with pins and buttons.

**Fabric:** WHB - Whiteburst, MNS - Midnight Stone, HW - Honey Wheat

**Paint:** DTE - Dark Tone

**Trim:** DTE - Dark Tone

(All prices in this price list for the work surfaces include the work surface top, 1 pair of mounting cantilevers, pins and buttons to secure work surfaces, and 1 mending bracket. Corner work surfaces include above plus additional corner bracket, grommet and cover. All items above will be listed on your acknowledgement, itemized under each part number.

**Pedestals - 20" Deep, BBF and FF style, with locks - "B" Style Fronts**

### Locks

All pedestals, lateral pedestals, and overheads come standard with lock. All units are keyed random. Requests for different keying can be accommodated, and must be specified.



Optional **W001-W050**  
Lock core and keys

**List \$25**

### Panels

Panels are 2" thick, fabric covered on both sides and feature a steel frame, with a painted aluminum top cap. Each panel comes standard with leveling glides and 2 raceway covers. Electric panels come standard with the wiring harness installed, 2 raceway covers with notched receptacle openings and covers, and a panel-to-panel electric connector. (Order receptacles separately) All items above will be listed on your acknowledgement itemized under each part number.

**A pass through cable must be ordered separately when connecting power through a 3-way or 4-way connector.**

All Power is UL Listed



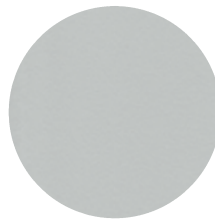
## In Stock Options



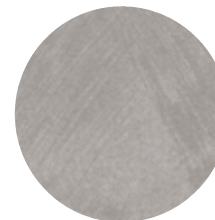
Cloud White  
Laminate  
Side 1



Wild Cherry  
Laminate  
Side 2



Light Gray  
Laminate  
Side 1



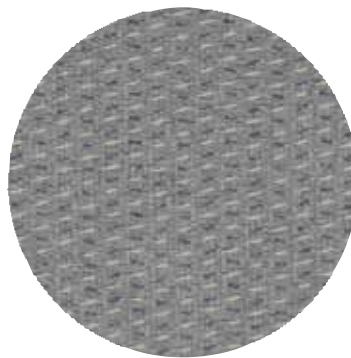
Brushed Nickel  
Laminate  
Side 2



Dark Tone - Paint, Trim,  
and Edge Band



Honey Wheat Fabric



Midnight Stone Fabric



Whiteburst Fabric