

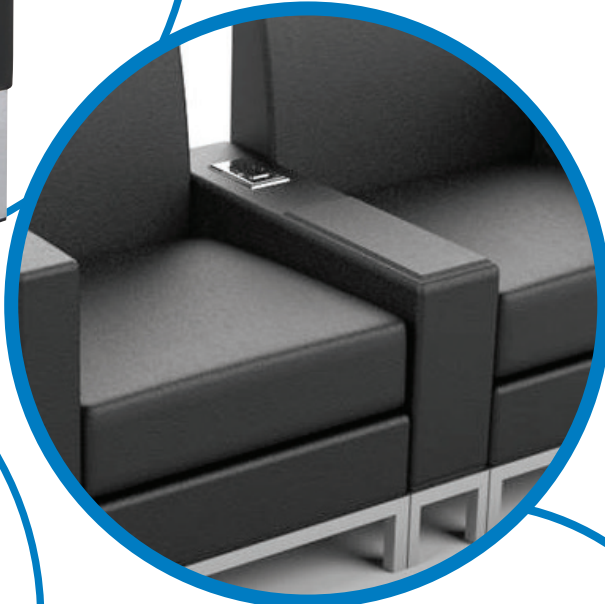
spec **it.**

WST51P-B18

Faux Leather Charging Center Console



- Covered in High Performance, Easy Care Faux Leather
- Box Spring Seat for Durability and Comfort
- Available in Black Faux Leather (-B18)
- Chrome Finish Base
- GREENGUARD Indoor Air Quality Certified®



Max. Overall Size: 28.5"W x 6.25"D x 20"H

Weight: 18 lbs.

Cube: 2.38

Carton Dimensions: 21" x 7" x 29"

Carton Weight: 31 lbs.

it.
office furniture distributors